



Melges 20 World Championship

Newport, Rhode Island
October 3-7, 2017

SAILING INSTRUCTIONS

1 ORGANIZING AUTHORITY

The Organizing Authority (OA) is the New York Yacht Club Regatta Association in collaboration with the International Melges 20 Class Association (IM20CA), with support from Sail Newport and Melges USA.

2 RULES

- 2.1 The regatta will be governed by the 'rules' as defined in the current Racing Rules of Sailing (RRS).
- 2.2 The following US Sailing prescriptions will apply: RRS 60.3, RRS 61.4, RRS 67, and RRS 76.1
- 2.3 If there is a conflict between languages, the English text will take precedence.
- 2.4 If there is a conflict between rules or regulations, other than RRS, the sailing instructions will prevail. This changes RRS 63.7.

3 NOTICES TO COMPETITORS

Notices to competitors will be posted on the Official Notice Board located at the New York Yacht Club Sailing Center and may also be posted on the event website at www.nyyc.org.

4 CHANGES TO SAILING INSTRUCTIONS

Any change to the sailing instructions will be posted before 0900 hours on the day it will take effect, except that any change to the schedule of races will be posted by 2000 hours on the day before it will take effect.

5 SIGNALS MADE ASHORE

- 5.1 Flag signals will be flown from the flagpole at Harbour Court and may be duplicated in the vicinity of the Alofsin Piers at Sail Newport.
- 5.2 When flag AP is displayed ashore, '1 minute' is replaced with 'not less than 60 minutes' in race signal AP. This changes RRS Race Signals.
- 5.3 When flag Y is displayed ashore, RRS 40 applies at all times while afloat. This changes RRS Part 4 Preamble.

6 SCHEDULE OF EVENTS

- | | | | |
|-----|------------------------|--|--|
| 6.1 | Friday, September 29 | 1200-1800 | Measurement Checks |
| | Saturday, September 30 | 0900-1800 | Measurement Checks |
| | Sunday, October 1 | 0900-1800 | Measurement Checks |
| | Monday, October 2 | 0900-1800 1300-1800 | Measurement Checks Registration/Check-in |
| | Tuesday, October 3 | 0800-1600 0900-1630 1100 1730 1800 | Measurement Checks Registration/Check-in Initial Warning Signal for Pre-World Championship <i>(three races scheduled)</i> Skippers Meeting – NYYC Arcadia Room Opening Ceremonies - New York Yacht Club |
| | Wednesday, October 4 | 1100 1700 | Race Day 1 - Initial Warning Signal Social & Daily Awards at New York Yacht Club |
| | Thursday, October 5 | 1100 1700 | Race Day 2 - Initial Warning Signal Social & Daily Awards at New York Yacht Club |
| | Friday, October 6 | 1100 1800 | Race Day 3 - Initial Warning Signal World Championship BBQ at New York Yacht Club |
| | Saturday, October 7 | 1100 1400 After Racing | Race Day 4 - Initial Warning Signal No Initial Warning Signal after this time Final Awards Ceremony at Sail Newport |
- 6.2 Up to ten (10) races are scheduled. The Race Committee (RC) may run up to four races on any day.
- 6.3 When more than one race will be held on the same day, the warning signal for each succeeding race will be made as soon as practicable. To alert boats that another race will begin soon, the course signals will be displayed with one sound signal at least 5 minutes before the warning signal for the next race.
- 6.4 On the final day of the regatta, the initial warning signal for the final race will not be made after 1400 hours. The warning signal for a start following one or more general recalls may be made after 1400.

7 CLASS FLAG

The class flag will be white with the Melges 20 Class insignia.

8 RACING AREA

- 8.1 Racing will take place on the waters of Rhode Island Sound (Area A), south of West Passage (Area C), or Narragansett Bay (Area R). The racing areas are shown in Attachment A.
- 8.2 A flag designating the rendezvous area will be displayed at 0900 and the race committee will endeavor to announce the location at that time on VHF Channel 72.

9 THE COURSES

- 9.1 The diagrams in Attachment B show the courses, including the approximate angles between the legs, the order in which marks are to be passed and the side on which each mark is to be left.
- 9.2 No later than the warning signal, the race committee will display the course to be sailed, the approximate compass bearing, and the distance of the first leg.
- 9.3 Mark 3S/3P are a gate. In the event one of the gate marks is missing, the single remaining mark shall be rounded to port.
- 9.4 Mark 2 is a windward offset mark adjacent to the windward Mark 1.

- 9.5 The race committee intends to set Mark “F” approximately 5 to 6 boat lengths to leeward of Mark “1” with the intention of keeping boats away from the port tack layline to the first windward mark. Mark “F” is to be left to port on both the upwind and the downwind legs. The location of Mark “F” or the failure of the race committee to set Mark “F” shall not be grounds for redress. This changes rule 62.1(a).

10 MARKS

- 10.1 Marks 1, 2, 3P and 3S will be orange inflatable marks. Mark F will be a pink inflatable mark.
- 10.2 New mark 1 as provided in instruction 12, will be a yellow inflatable mark. In the event of a leeward change of course, the new gate will be the original orange marks.
- 10.3 The starting mark will be either a race committee signal boat displaying an orange flag or a yellow inflatable mark.
- 10.4 The finishing mark will be a green inflatable mark or a race committee signal boat displaying a blue flag.

11 THE START

- 11.1 The starting line will be between a staff displaying an orange flag on the starboard end signal boat and a yellow inflatable mark OR a staff displaying an orange flag on the port end signal boat.
- 11.2 A boat starting later than 5 minutes after the starting signal will be scored DNS. This changes A4.1 and A.5.
- 11.3 The race committee will identify OCS boats by radio on VHF Channel 72. Failure of equipment, failure to hear a hail, delay in hailing or the order in which hails are given will not be grounds for redress. This changes RRS 62.1(a).

12 CHANGE OF THE NEXT LEG OF THE COURSE

- 12.1 To change the next leg of the course, the race committee will lay a new mark (or move the finishing line to a new position) and remove the original mark as soon as practicable. When in a subsequent change a new mark is replaced, it will be replaced by an original mark.
- 12.2 The race committee may change the course by up to five degrees in bearing and/or 0.2 nm in length without a signal or change of mark color. This changes RRS 33.
- 12.3 In the event of a windward change of course, Mark 2 and Mark F will not be set.

13 THE FINISH

- 13.1 The finishing line for Course 5 will be between a staff displaying a blue flag on the race committee vessel at the starboard end and the course side of the green inflatable port-end finishing mark located approximately .1 nautical mile to windward of mark 1.
- 13.2 The finishing line for Course 4 will be between a staff displaying an orange flag on the race committee signal vessel and a green inflatable mark OR a staff displaying a blue flag on a race committee vessel. The finishing line may be shorter than the starting line.

14 PENALTY SYSTEM

- 14.1 A boat may take a One-Turn Penalty when she may have broken one or more rules of Part 2 or rule 31 in an incident while *racing*. However, when she may have broken one or more rules of Part 2 while in the *zone* around a *mark* other than a starting *mark*, her penalty shall be a Two-Turns Penalty. This changes RRS 44.2.
- 14.2 If a breach of class Rules is found, penalties shall be at the discretion of the jury, in consultation with a non-competing Class Representative.
- 14.3 The Jury may impose suitable penalties, other than disqualification, for violations of the Class Rules or other non-Part 2 rules. This changes RRS 64.1.
- 14.4 In order to minimise protests Jury members may follow the racing on the race course. If they observe a red flag they will use the following signals to help boats take appropriate action:
- (a) A green and white flag with one sound means ‘The judges saw the incident and believe that no rule was broken.’

(b) A red flag with one sound means ‘The judges saw the incident and believe that one boat has or more boats have broken a rule.’ The judges will hail or signal each boat identified.

(c) A yellow flag with one sound means ‘The judge(s) did not observe the incident or are unable to make a decision’.

The signals displayed by the Jury Boat are for information only. If a red flag is displayed, the identified boat is not obligated to take a penalty. If a yellow or green and white flag is displayed, any boat may still protest another boat.

15 TIME LIMITS

15.1 The time limit for the first boat to sail the course and finish is 90 minutes. If no boat has passed the first windward mark 25 minutes after the starting signal, the race shall be abandoned.

15.2 Boats failing to finish within 30 minutes after the first boat sails the course and finishes will be scored Did Not Finish without a hearing. This changes RRS 35, A4 and A.5.

16 PROTESTS AND REQUESTS FOR REDRESS

16.1 Protests or requests for redress shall be submitted to the Jury Secretary as soon as possible, but not later than one hour after race committee signal boat has docked after the last race of the day, on the online protest form. This time will be posted on the Official Notice Board. This changes RRS 61.3 and 62.2.

16.2 Notices will be posted as soon as possible to inform competitors of hearings in which they are parties or named as witnesses. Hearings will be held in the Jury Room at the New York Yacht Club Sailing Center on each day beginning as soon as possible.

16.3 Notices of protests by the race committee or the jury will be posted within the protest time limit on the Official Notice Board to inform boats under RRS 61.1(b).

16.4 Breaches of instructions 18, 19, 21, 22, 23, 24, 25 and 27 will not be grounds for protest by a boat. This changes RRS 60.1(a).

16.5 On the last day of the regatta:

(a) a request for reopening a hearing shall be delivered within the protest time limit if the party requesting reopening was informed of the decision on the previous day;

(b) a request for reopening a hearing held on the last day shall be delivered no later than 30 minutes after the party requesting reopening was informed of the decision on that day;

(c) the time limit to request redress based upon an action or omission of the race committee or jury shall be 30 minutes after the decision was posted.

This changes RRS 62 and 66.

16.7 Per Class rule 13.1(b): In the case of a protest, the representative from each yacht that attends the protest in the protest room shall be the owner or the Category 1 driver. Category 2 or 3 sailors are not allowed in the protest room or to be in contact with the representative in the protest room.

17 SCORING

17.1 Three races are required to be completed to constitute a series.

17.2 When fewer than six (6) races have been completed, a boat’s series score will be the total of her race scores. When six (6) or more races have been completed, a boat’s series scores will be the total of her race scores excluding her worst score. This changes RRS A2.

18 SAFETY & CONDITIONS

18.1 A boat that retires from a race shall notify the race committee and/or the jury as soon as possible.

18.2 Races will not be started when the race committee deems that winds are consistently at or above 23 knots or gusting to 25 knots and above. If a race has been started and the wind increases to 23 knots and above, it remains at the discretion of the race committee whether or not to abandon the race. Races will not be started unless winds are consistently above 4 knots at the time of the start.

19 REPLACEMENT OF CREW OR EQUIPMENT

- 19.1 Substitution of crew will not be allowed without prior written approval of the jury. Approval will only be granted in exceptional circumstances and may be given on the condition that the original crew member will not be permitted to sail on the boat later in the championship.
- 19.2 In the case of damage, boats and/or equipment may only be substituted with the written permission of the jury. When the damage occurs later than 90 minutes before the first scheduled start of the day and before the start of the last race of the day, provisional verbal permission shall be obtained from the jury or race committee. Written permission by the jury shall be obtained before the end of the Protest Time limit on the day in which the substitution takes place.

20 EQUIPMENT AND MEASUREMENT CHECKS

Refer to SI Attachment C for measurement schedule.

21 COACH AND SUPPORT BOATS

- 21.1 Coach and support boats must register with the Organizing Authority prior to acting as a coach or support boat and shall be marked with identifying flags issued by the Organizing Authority. Boats shall display identifying flags at all times while they are acting as a coach or support boat.
- 21.2 All registered coach and support boats will carry on board and operate while on the water a VHF radio capable of transmitting and receiving on VHF Channels 16 and 72 and agree to assist the race committee if directed to do so.
- 21.3 A boat shall receive no outside assistance from: support boats, cell phone or radio communication, visual or vocal signaling, transfer of equipment or victuals or otherwise once she has left the dock for the day until she has finished the last race of the day, except in the case of emergency, or motor problems that cause the boat to not make her way to the starting area. A boat should not be towed once she has left the dock for the day until she has finished the last race of the last day, except in the case of emergency, or motor problems that cause the boat to not make her way to the starting area. If in the case of a motor problem, the boat shall make every attempt to fix the problem prior to the next days racing and shall make the boat available for inspection by the jury, race committee or class representative.
- 21.4 Individual coach or support boats shall not approach closer than 300 feet to any boat that is racing, except at mark roundings or the finish line where they shall not approach closer than 100 feet upwind of the windward mark or downwind of the leeward mark, and extensions of the finish line. At the warning signal for the start, individual coach or support boats shall leave the area being used by the racing boats and may station themselves outside of either the pin or committee signal boat, but no closer to either end than 100 feet.
- 21.5 Any breach of SI 21.1, 21.2, 21.3 or 21.4 by a coach or support boat may result in a penalty being applied to any or all boats serviced by that coach or support boat. The penalty may be disqualification or some other penalty as determined by the jury.
- 21.6 Coach and support boats shall, when requested by the race committee, tow or assist boats not associated with them. Coach and support boats will monitor VHF channel 72 and shall follow all instructions from the race committee.
- 21.7 Video and photos taken from any support and/or coach boat shall not be used as evidence at protest hearings. This alters RRS 63.6. The penalty for infringing this rule shall be assessed at the discretion of the event Jury or Protest Committee. This rule is not intended as a deterrent to social interaction before and between races.

22 HAUL-OUT RESTRICTIONS

All yachts shall be afloat no later than 1600 on Tuesday, October 3, 2017, and shall not be hauled out during the regatta except with and according to the terms of prior written permission of the Race Committee Chairman or Regatta Chairman.

23 PLASTIC POOLS

Plastic pools or their equivalent shall not be used around competing yachts between the close of registration and the end of the regatta.

24 RADIO COMMUNICATION

- 24.1 This supplements but does not change RRS 2 and 41. All boats shall carry a marine band VHF receiver capable of receiving normal international channels. Boats shall use the radio to report retirement from racing and may use the radio to request assistance in an emergency. These specific uses, as well as listening to race committee communications on VHF Channel 72, will not break the restriction on not using a VHF Radio in Class Rule C.5.1(b)(2). No other transmissions are permitted by competing yachts during each racing day from the first warning signal until the end of the last race of the day.
- 24.2 The race committee may use the radio to advise competitors of race information.
- 24.3 The use of mobile/cell phones or any device capable of sending and/or receiving external electronic communication and/or connecting to the internet is prohibited after the first warning signal (or any other time considered appropriate by the Organizing Authority) on each race day until the boat has completed its day's racing, except in an emergency threatening the safety of any sailor or the flotation of a boat. A report shall be submitted to the jury of any such use.

25 PRIZES

Trophies will be awarded as stated in the NOR.

26 DISCLAIMER OF LIABILITY

Competitors participate in the regatta entirely at their own risk. It is the competitor's decision to enter the Championship or to start or continue in any race. Competitors' attention is drawn to RRS Fundamental Rule 4, Decision to Race. The Organizing Authority will not accept any liability for material damage or personal injury or death sustained in conjunction with or prior to, during, or after the regatta.

27 INSURANCE

All yachts competing are required to carry current Third Party Property Liability Insurance as outlined in NOR 17.

28 NOTES

- 28.1 Competitors are reminded that Narragansett Bay and its approaches are considered restricted channels for commercial traffic and vessels in the navigation channel restricted in their ability to maneuver. Competitors must comply with the government right-of-way rules when in proximity to commercial or privileged marine traffic.
- 28.2 All times herein are Eastern Daylight times. Bearings are in degrees magnetic and are approximate. Distances used herein are expressed in nautical miles (when not otherwise defined) and are approximate.
- 28.3 Newport Tides

| Day | Date | High | | Low | |
|-----------|--------|------|-----|------|------|
| Tuesday | Oct. 3 | 0629 | 3.6 | 1217 | 0.2 |
| Wednesday | Oct. 4 | 0712 | 4.0 | 1259 | -0.0 |
| Thursday | Oct. 5 | 0755 | 4.3 | 1343 | -0.2 |
| Friday | Oct. 6 | 0839 | 4.5 | 1428 | -0.3 |
| Saturday | Oct. 7 | 0924 | 4.6 | 1514 | -0.3 |

- 28.4 For further information, please visit the official NYYC website or contact the Event Chairman or the New York Yacht Club Sailing Office.

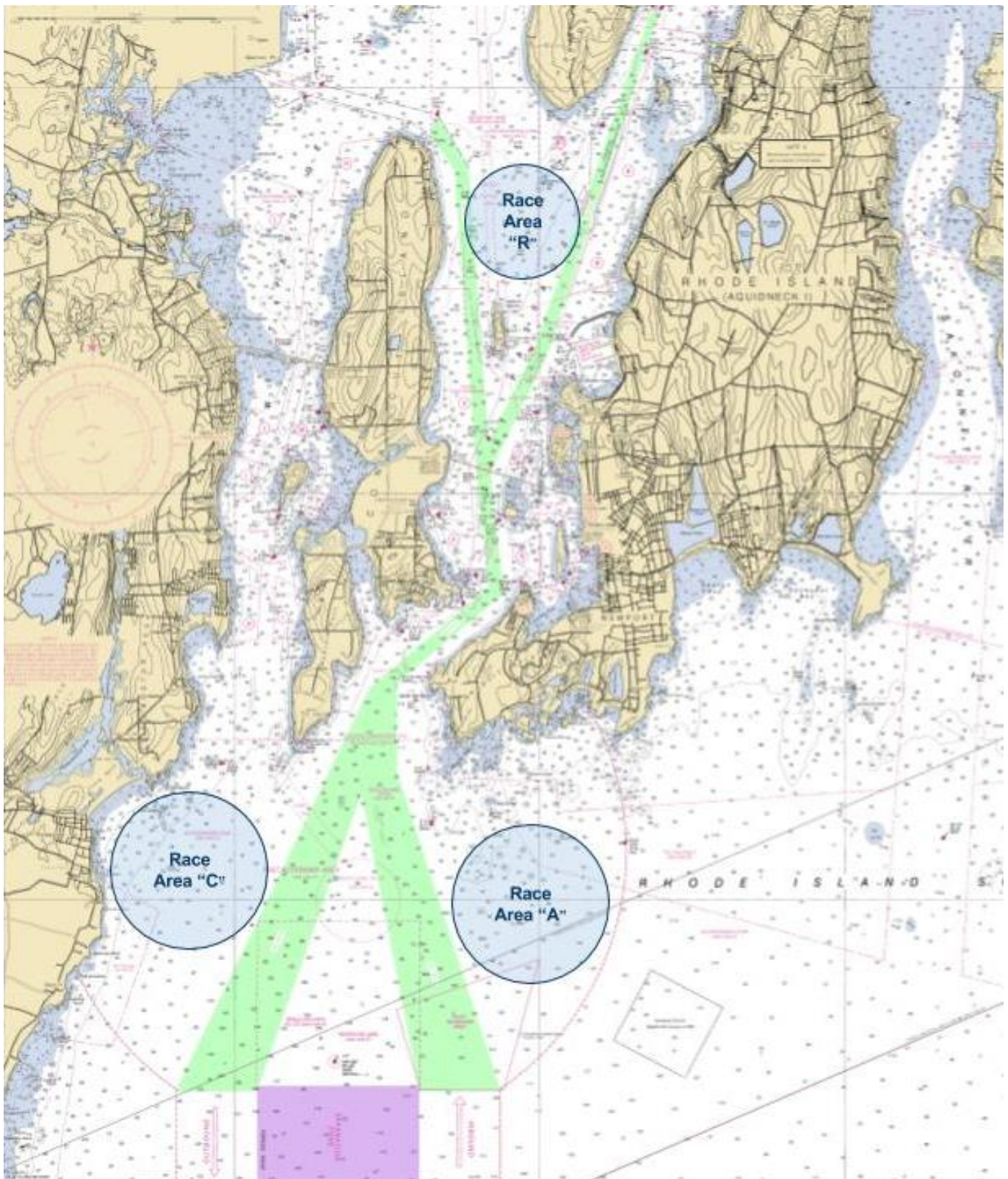
Lynn Lynch, Sailing Director
Tel: +1 401-845-9633
Email: sailingoffice@nyyc.org

Sam Rogers, Class Manager
Tel: +1 952.426.2330
sam.rogers42@gmail.com

© Copyright New York Yacht Club 2017. All Rights Reserved.

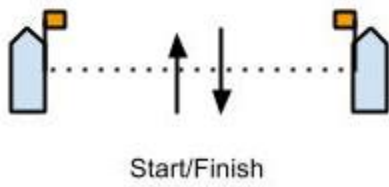
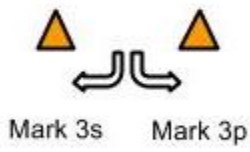
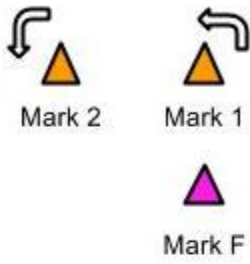
New York Yacht Club; NYYC; Harbour Court, club burgee; certain other logos and marks are trademarks or registered trademarks of the New York Yacht Club in the United States and other countries. All Rights Reserved. Use is prohibited without written permission of the Secretary of the New York Yacht Club.

SI ATTACHMENT A – PRIMARY RACE AREAS

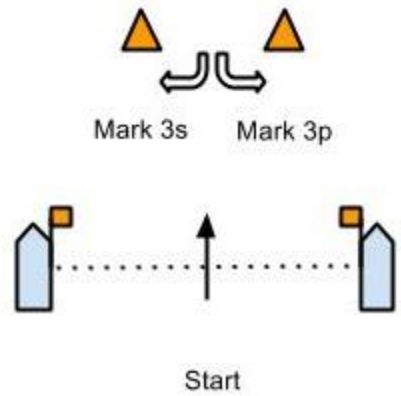
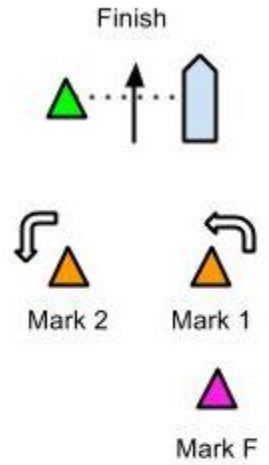


SI ATTACHMENT B – COURSE DIAGRAMS

COURSE #4 - 4 Legs



COURSE #5 - 5 legs



SI ATTACHMENT C – MEASUREMENT SCHEDULE

To be posted.