



# The In-Shore Race of the NY-BCN Transoceanic Record

## Fundació Navegació Oceànica de Barcelona

New York Harbor  
April 3, 2010

### SAILING INSTRUCTIONS

#### **1 RULES**

- 1.1 The regatta will be governed by the rules as defined in *The Racing Rules of Sailing (RRS)*. No national authority prescriptions will apply.
- 1.2 The *IMOCA Open 60' Class Rules* will apply.
- 1.3 The Protest Committee may impose suitable penalties, other than disqualification, for violations of a rule. This changes RRS 64.1.
- 1.4 If there is a conflict between languages, the English text will take precedence.

#### **2 ENTRIES**

Entry is limited to the IMOCA 60 Class yachts *W Hotels* and *Estrella Damm*.

#### **3 NOTICES, COMMUNICATION AND SIGNALS MADE ASHORE**

- 3.1 Notices, including race results, amendments and protest hearing schedules, shall be posted on the Official Notice Board located adjacent to the boat docks at the North Cove Marina.
- 3.2 The Race Committee will use VHF channel 69. If necessary, the Race Committee may change to VHF channel 72 either by announcing on VHF 69, or, if both yachts are still at the dock, orally. Both yachts are asked to confirm the change with the Race Committee. Such a change shall not be made after the warning signal.
- 3.3 Any change to the sailing instructions will be posted before 1000 on the day it will take effect. Flag "Lima" will be flown ashore to signify such posting.
- 3.4 When Pennant "AP" is displayed while one or both yachts are still in the North Cove Marina basin, "one minute" is replaced with "not less than one hour" in Race Signal "AP".

#### **4 SCHEDULE OF RACES**

- 4.1 Two races are scheduled on Saturday, April 3.
- 4.2 The warning signal for the first race is scheduled for 1300.
- 4.3 Racing shall end no later than 1800.

## **5 RACE AREA, COMMERCIAL TRAFFIC AND SECURITY ZONES**

- 5.1 Racing will take place in the lower Hudson River and Upper Bay of New York Harbor. The start/finish line will be at the north end of Battery Park adjacent to North Cove Marina.
- 5.2 All commercial vessels shall have right of way over all racing sailboats. If a racing sailboat crosses the bow of a commercial vessel and that vessel alters course or speed as a result, the sailboat may be disqualified by the race committee. The race committee may disqualify a yacht at its discretion without a hearing for any interference with commercial vessels.
- 5.3 The US Coast Guard (USCG) has established a 150-yard security zone around Ellis and Liberty Islands as shown below. Additionally, there is a 100-yard security zone around all US Naval or USCG vessels. These security zones are considered to be obstructions on the race course and no boat is allowed to sail inside the security zones. In addition to the actions described below, violators are subject to a fine by the USCG of \$50,000 and imprisonment of not more than 5 years. The Race Committee may disqualify, without a hearing, any yacht found to have sailed inside a security zone at any time while racing.

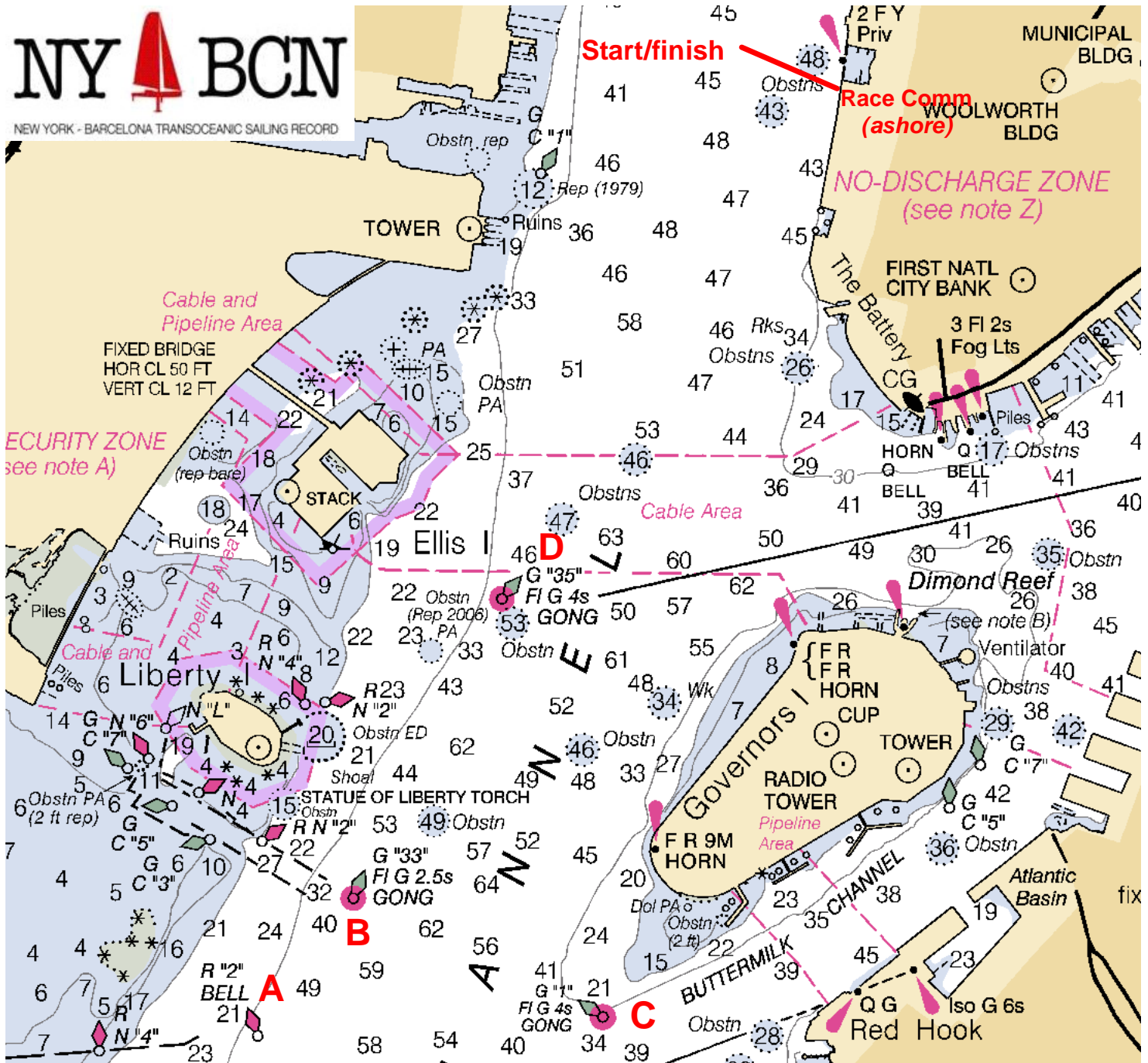


## **6 COURSES AND ROUNDING MARKS**

- 6.1 The Race Committee will announce the course on the VHF channel to both yachts no later than the warning signal.
- 6.2 The course announced will include the marks in the order to be rounded after starting and before finishing.
- 6.3 Yachts are asked to acknowledge on the VHF channel that they have received the course.
- 6.4 Government buoys specified for a course shall be rounded on the side such that the line from the previous mark and the line to the next mark do not cross. If the next course is a reciprocal course, the mark shall be left on the port side.
- 6.5 Government buoys not specified as marks of the course have no required side. Caution should be exercised for safe navigation.

6.6 Rounding marks are government marks designated with letters as follows. Positions are approximate and should be confirmed by each yacht.

- |          |   |                               |
|----------|---|-------------------------------|
| <b>A</b> | R "2" BELL south of Liberty Island                | 40° 40.753' N; 074° 02.674' W |
| <b>B</b> | G "33" Fl G 2.5s GONG southeast of Liberty Island | 40° 41.029' N; 074° 02.426' W |
| <b>C</b> | G "1" Fl G 4s GONG southwest of Governors Island  | 40° 40.788' N; 074° 01.728' W |
| <b>D</b> | G "35" Fl G 4s GONG southeast of Ellis Island     | 40° 41.652' N; 074° 02.005' W |



Note: Chartlet based on NOAA Chart 12327 ed. 101 April 08, not to be used for navigation purposes

**7 THE START**

7.1 Races will be started as described below. This changes Rule 26.

<i>Signal</i>	<i>Flag and Sound</i>	<i>Minutes before starting signal</i>
Warning	Class flag numeral pennant #1; one sound	10
Preparatory	P; one sound	5
One-minute	Preparatory flag removed; one long sound	1
Start	Class flag removed; one sound	0

7.2 The starting line will be between a staff displaying an orange flag at the Race Committee shore station at Battery Park, south of North Cove Marina, and the course side of the starting mark, which will be a 5' yellow inflatable mark.

**8 INDIVIDUAL RECALLS**

The Race Committee will endeavor to hail each premature starter on the VHF channel. Failure to make such an announcement shall not be grounds for redress. This changes rule 62.1(a).

**9 THE FINISH**

The finishing line will be between a staff displaying an orange flag at the Race Committee shore station at Battery Park, south of North Cove Marina, and the course side of the finishing mark, which will be a 5' yellow inflatable mark.

**11 PENALTY SYSTEM**

A yacht that may have broken a rule of Part 2 while racing may take a One-Turn Penalty. This changes rule 44.1.

**12 TIME LIMIT**

The time limit to sail the course and finish is two hours.

**13 PROTESTS AND REQUESTS FOR REDRESS**

13.1 Yachts intending to protest shall hail 'protest' on the VHF channel.

13.2 Written protests or requests for redress shall be submitted to the Race Committee as soon as possible after the last race of the day, but not later than one hour after the race is abandoned, postponed or the yacht finishes.

**14 SCORING**

14.1 One race is required to be completed to constitute a series.